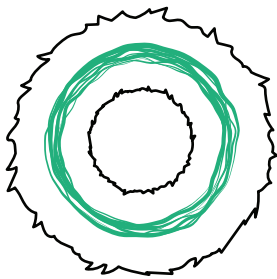


WREATHKEEPER™ STORAGE BAG

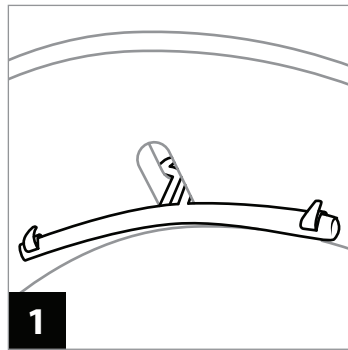
Model No. TK-10107 | TK-10111 | TK-10112
TK-10113 | TK-10115 | TK-10116



How to use your wreath storage bag

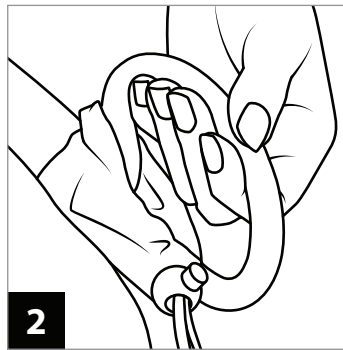


Rattan / Wicker Frame



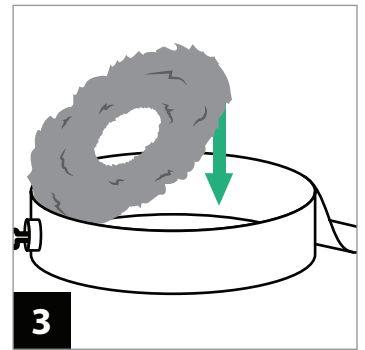
1

Insert the hanger inside the bag with the handle facing outside.



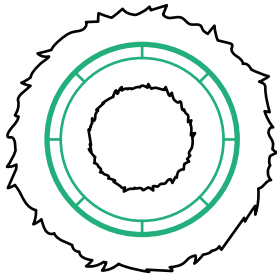
2

Grab onto the handle and tighten the drawstring.

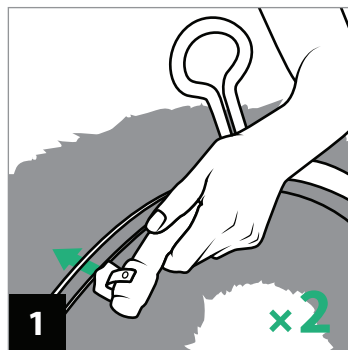


3

Insert your wreath and attaching the frame to the hanger hooks.

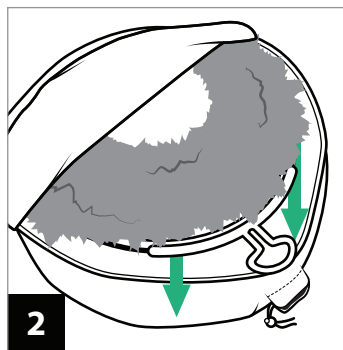


Metal Frame



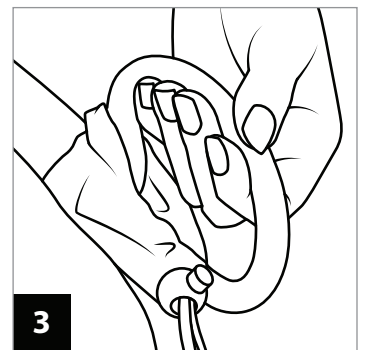
1

Attach both hooks on the metal hanger to your wreath frame.



2

Insert the wreath with the hanger facing the hole.



3

Grab onto the handle and tighten the drawstring.



TREEKEEPER™
WWW.TREEKEEPERBAGS.COM