

V 04070



www.VillageLighting.com

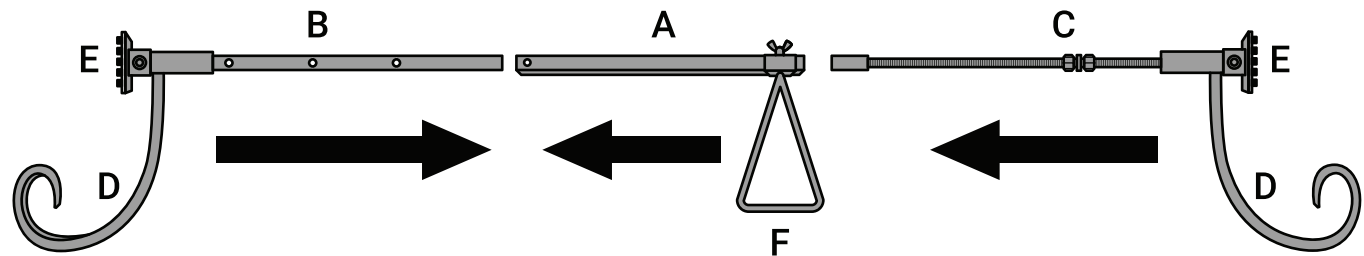
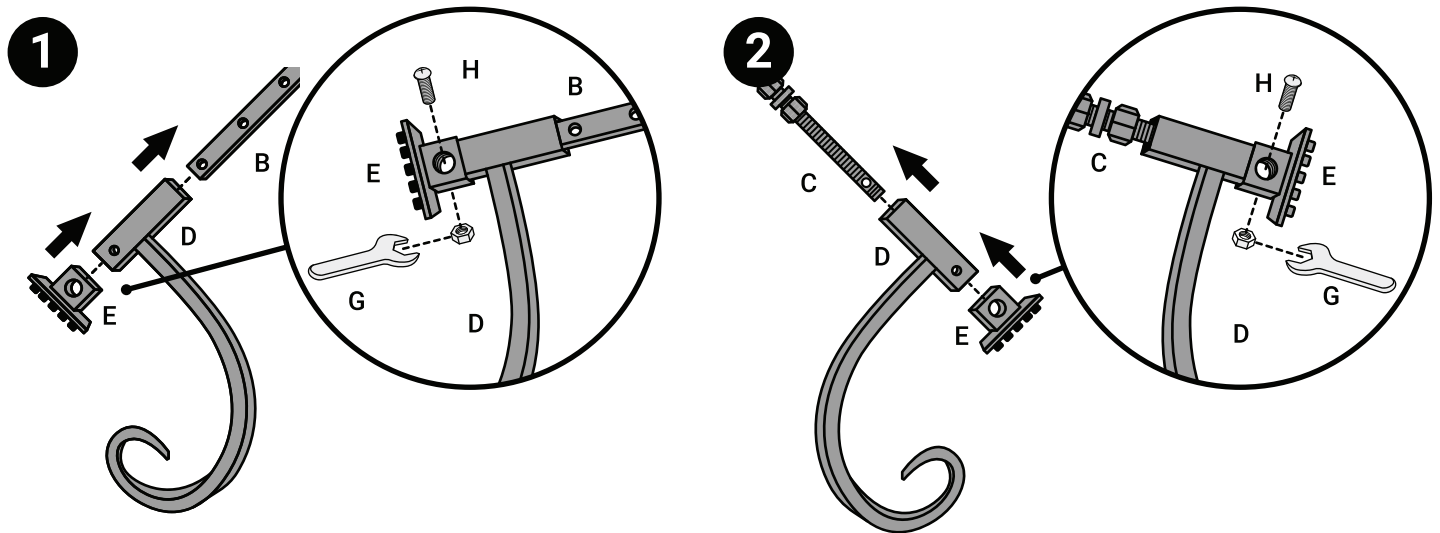
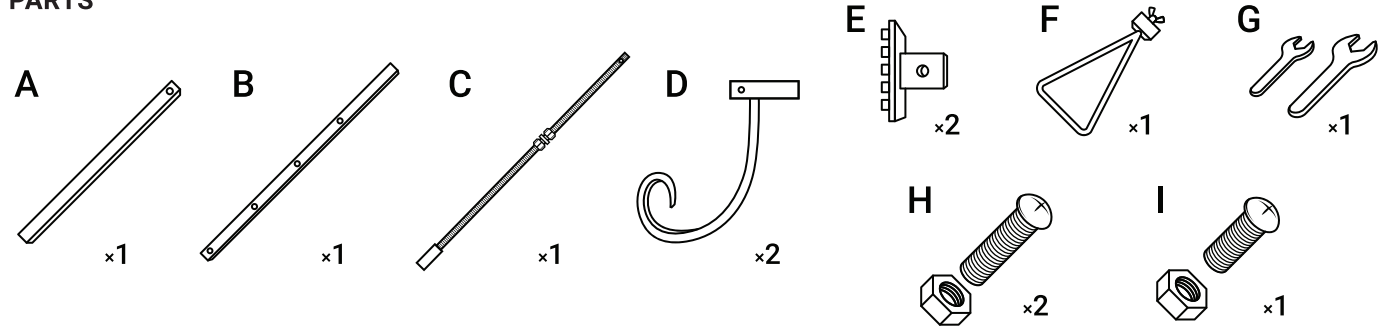
SLIM ADJUSTABLE GARLAND HANGER

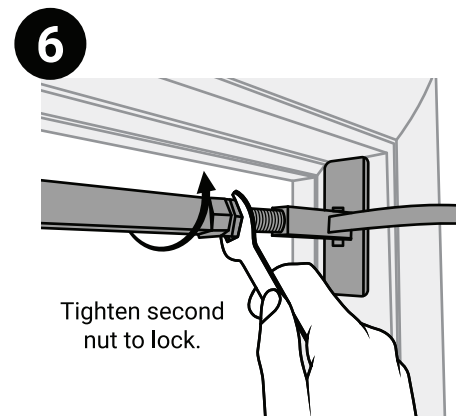
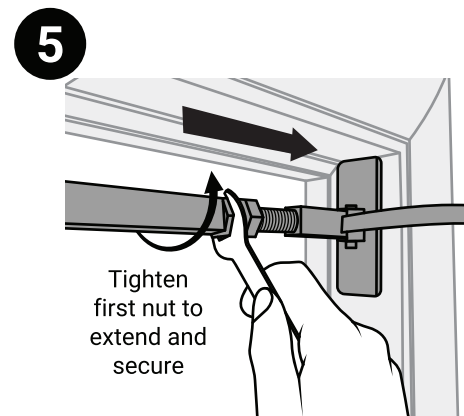
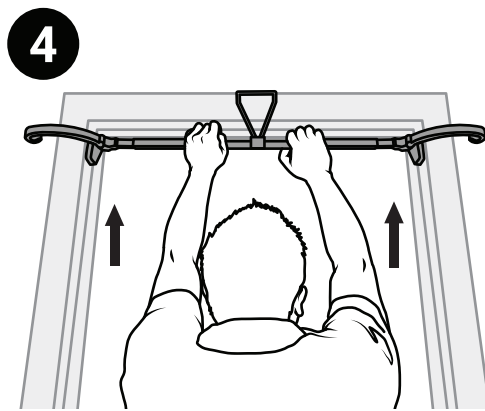
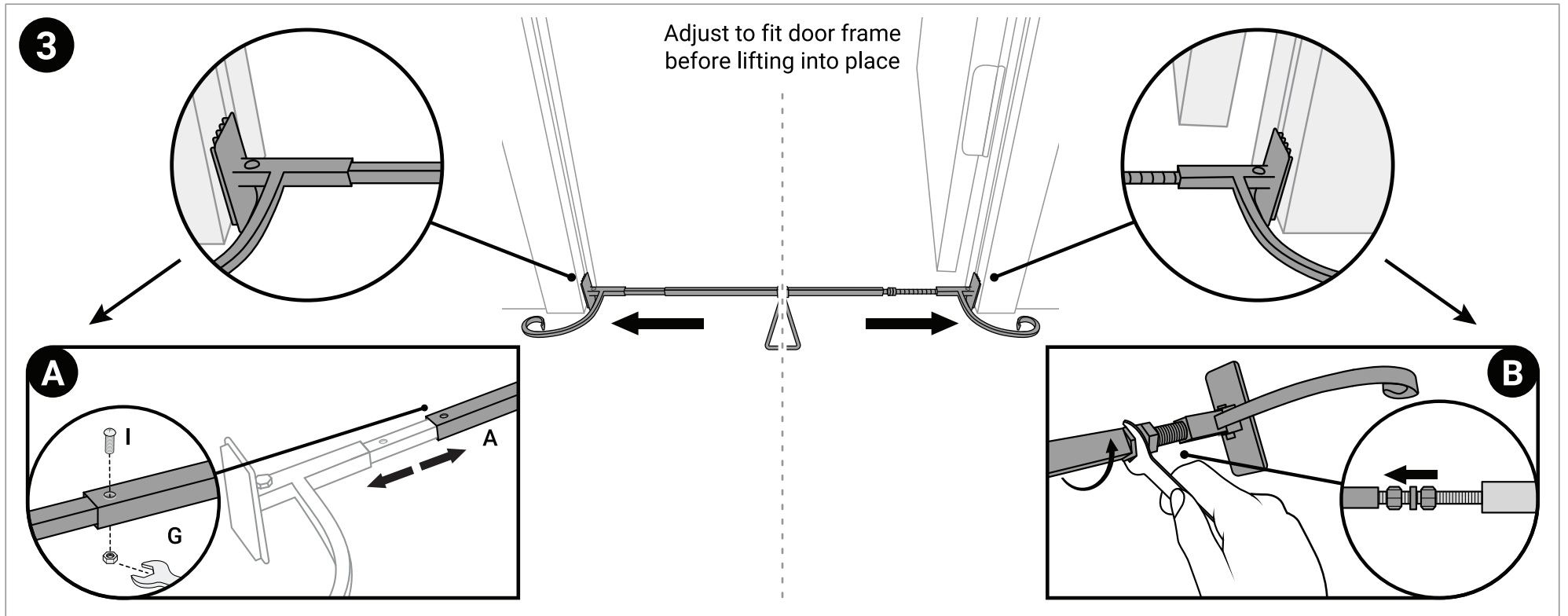
MODEL #: V-20529 | PATENT NO. US 9,480,206

IMPORTANT, RETAIN FOR FUTURE REFERENCE:
READ CAREFULLY

For assistance with assembly,
replacement parts or to activate your warranty:
www.VillageLighting.com | Support@VillageLighting.com

PARTS





**IMPORTANT SAFETY INSTRUCTIONS:
READ CAREFULLY**

1. This item hangs from above your door. If over-weighted / incorrectly installed, it may fall causing damage to the hanger and decor.

2. Falling could also result in serious injury to people or items.

3. Do not hang anything other than garland from the garland hanger.

4. The hanger uses high pressure to secure it. Be careful when installing, especially at pinch points.

5. If a ladder is used, follow the safety instruction on your ladder and position it in a safe place. Always have someone assist you on the ladder for safety.

6. **DO NOT EXCEED 20 lb OF WEIGHT** on the garland hanger.

7. Save these instructions.