



**TREEKEEPER™**

WWW.TREEKEEPERBAGS.COM

For assistance with assembly or installation, parts and customer service:  
www.TreeKeeperBags.com/Help | Support@VillageLighting.com

# PRO SLIM UPRIGHT TREE BAG

MODEL #: TK-10105  
PATENT NO. US 7,694,494 B2

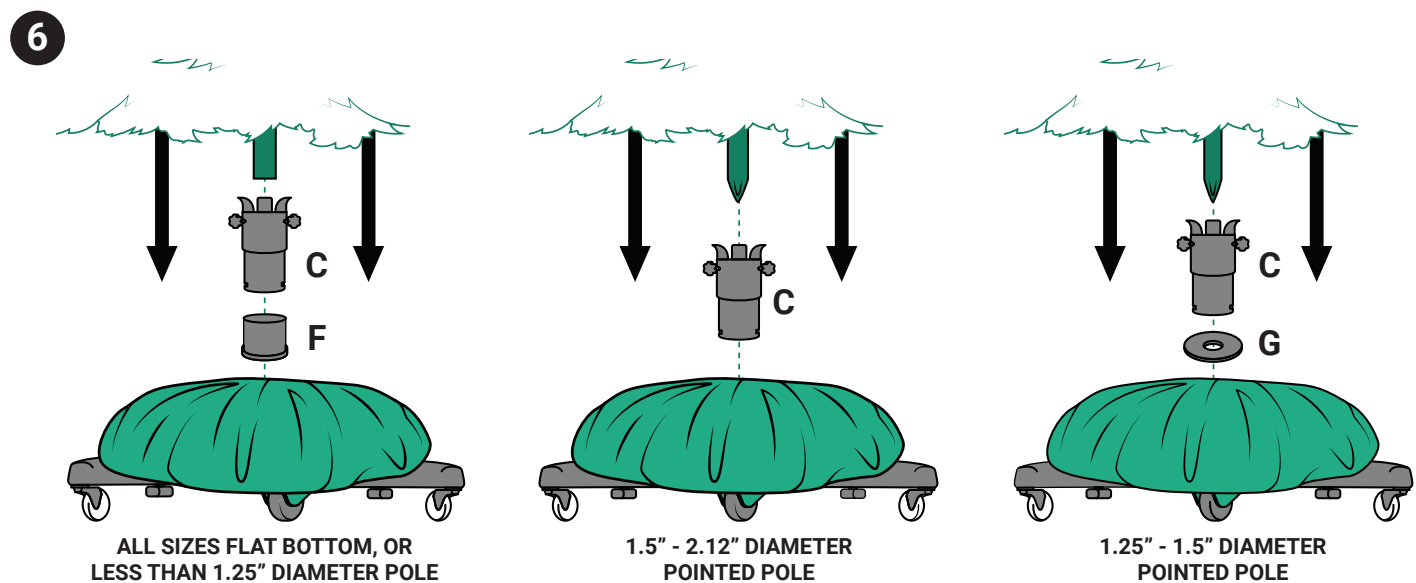
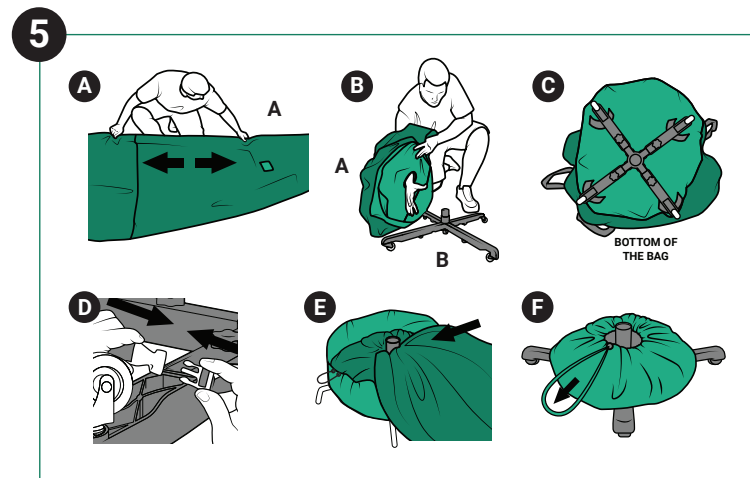
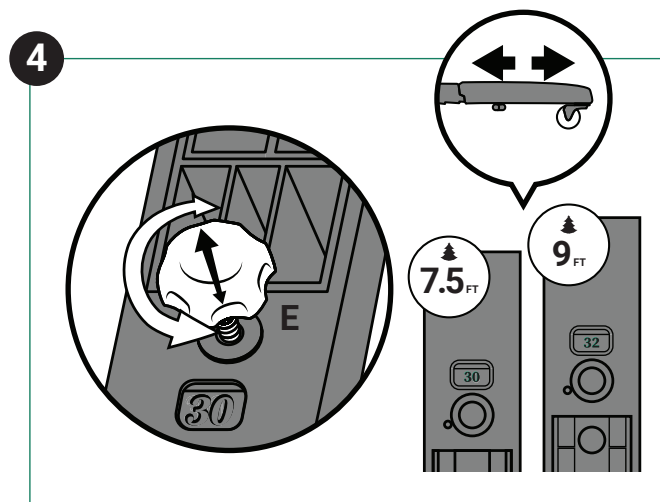
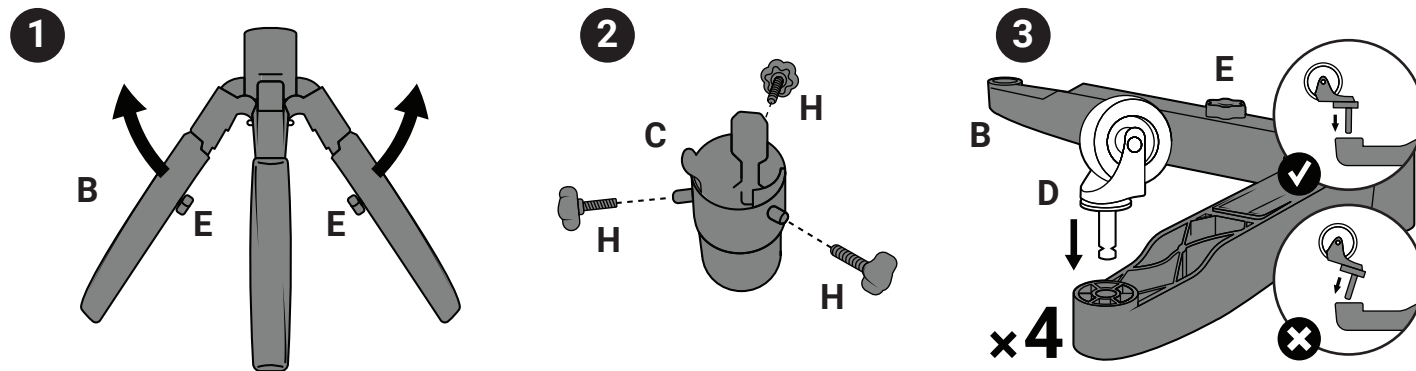
## PARTS :



\*comes preassembled

IMPORTANT, RETAIN FOR FUTURE REFERENCE:  
READ CAREFULLY

Intended for indoor use



ALL SIZES FLAT BOTTOM, OR  
LESS THAN 1.25" DIAMETER POLE

1.5" - 2.12" DIAMETER  
POINTED POLE

1.25" - 1.5" DIAMETER  
POINTED POLE



**TREEKEEPER™**

WWW.TREEKEEPERBAGS.COM

For assistance with assembly or installation, parts and customer service:  
[www.TreeKeeperBags.com/Help](http://www.TreeKeeperBags.com/Help) | [Support@VillageLighting.com](mailto:Support@VillageLighting.com)

# PRO SLIM UPRIGHT TREE BAG

MODEL #: TK-10105  
 PATENT NO. US 7,694,494 B2

## PARTS :

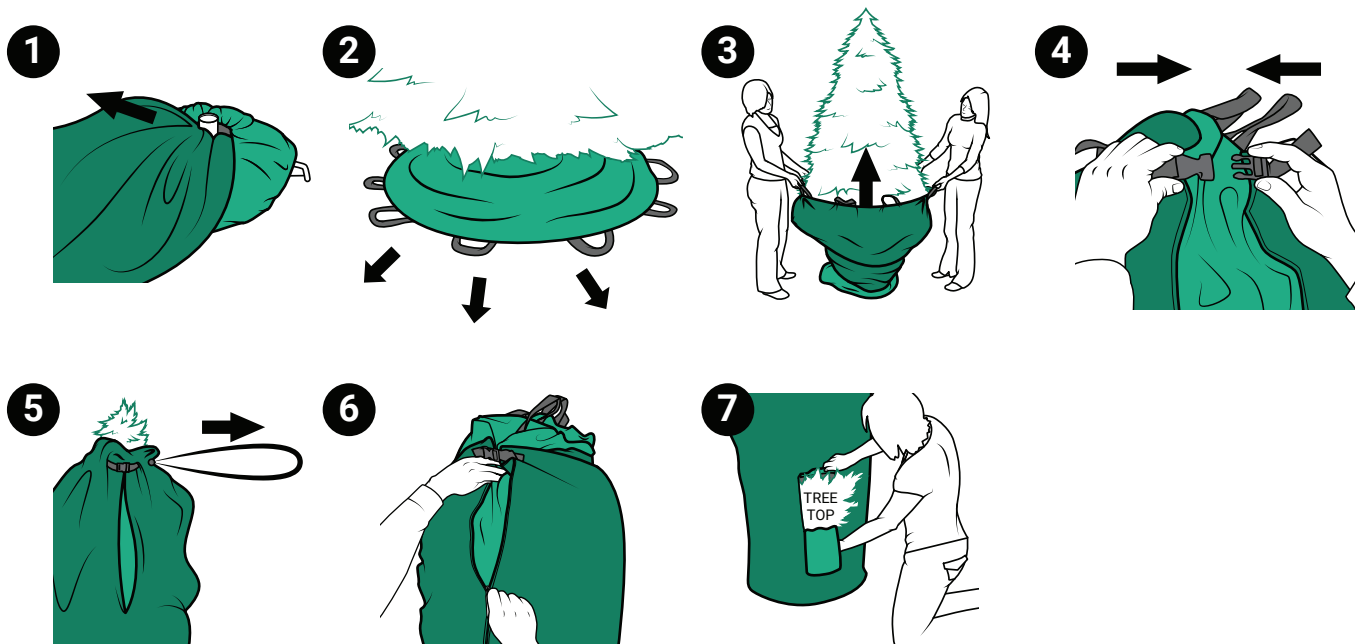


\*comes preassembled

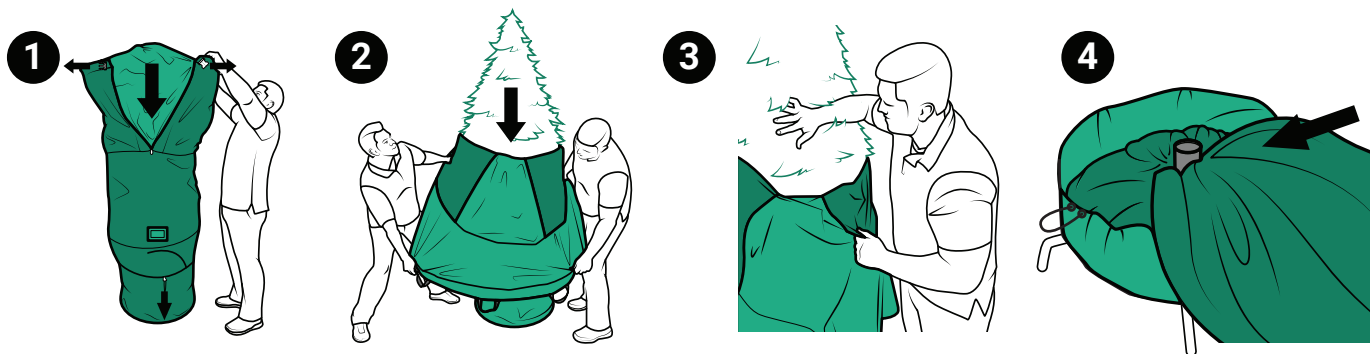
IMPORTANT, RETAIN FOR FUTURE REFERENCE:  
 READ CAREFULLY

Intended for indoor use

## SETUP INSTRUCTIONS



## TAKEDOWN INSTRUCTIONS



### ⚠ CAUTION

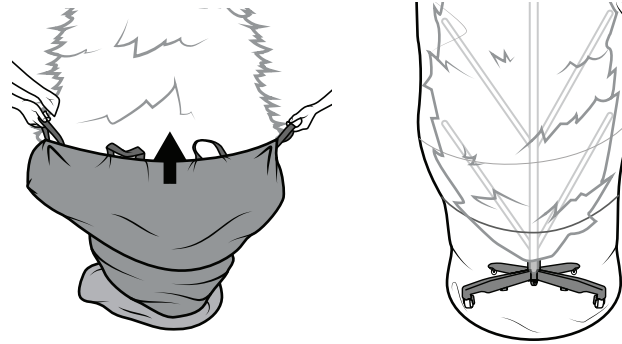


**DO NOT** lean the bag on its side and pull all the weight of the tree on one or two legs. Doing so could cause damage your tree stand, tree, or yourself. **ALWAYS** use caution when leaning the tree over.

**DO NOT** put too much pressure on the stand while tipped as this could result in damaging the trunk of the tree. Use **CAUTION** when lifting the tree as it may be heavy. Use **EXTREME CAUTION** when moving the tree up or down stairs. Whenever possible, **USE TWO OR THREE PEOPLE TO STORE YOUR TREE.**

# TREE BAG TROUBLESHOOTING, TIPS & FAQ

## HOW THE UPRIGHT TREE BAG WORKS

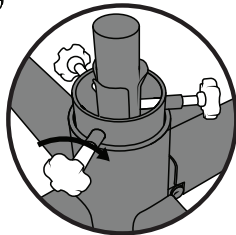


The bag pushes up on the hinged branches and compresses them into a vertical position. Sometimes the bottom branches are the hardest to get started because they're the largest.

### MY TREE PULLS OUT OF STAND WHEN TRYING TO PULL THE BAG UP.



Make sure the collar knobs are very tight.



### DOES IT SEEM LIKE YOUR BAG IS TOO SMALL?



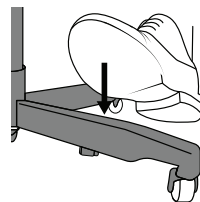
Always Use 2 People



Make sure that all of the buckles, zippers and straps on both sides are undone.



Start by pulling up on one side first, then work your way around to the other side.



Apply pressure to the stand to keep it stable when pulling up.



Make sure the bag is not twisted when pulling up. Untwist and continue to pull up.

### MY BAG IS STUCK! I CAN'T PULL IT DOWN TO SKIRT POSITION.



Let the skirt hang down as far as it can.



Make sure all the Buckles, Zippers and straps are opened.



Reach your hand inside the bag and press the branch tips inward and tug down the bag to free it from the branches. Repeat this step and work your way around the tree.